

ENGLANDS



18 Reservoir Retreat

Edgbaston, Birmingham, B16 9EH

£385,000





PROPERTY DESCRIPTION

A deceptively spacious end terrace property is set over three floors and is conveniently located just a short distance from the delightful grounds of Edgbaston Reservoir. This four bedroom property combines traditional period features with modern refurbishments, and comprises lounge/diner, kitchen, four bedrooms, bathroom and ensuite. It also has the benefit of a useful cellar, rear garden and permit street parking.

Reservoir Retreat is a cul-de-sac off Reservoir Road, which in turn leads off Monument Road. The property is easily accessible to Birmingham University. It is readily accessible to the Queen Elizabeth Medical Centre and the University of Birmingham as well as excellent amenities around Harborne High Street and regular transport services along Hagley Road through to comprehensive City Centre leisure, entertainment and shopping facilities.



Tel: 01214271974



Entrance door leads into:

VESTIBULE

Having tiled flooring, ceiling light point, partially glazed inner door leading into:

HALLWAY

Having tiled flooring, coving to ceiling, two ceiling light points, two column radiators, stairs rising to first floor accommodation, door leading to basement and further partly glazed door leading to side elevation.

LOUNGE/DINER

7.69m max x 3.85m max (25'2" max x 12'7" max)
Having wooden flooring, coving to ceiling, two ceiling light points with ceiling roses, two feature cast iron fireplaces with tiled insets, one having a working gas fire, two column radiators, double glazed sash window with shutters and double glazed French doors with shutters leading to garden.

KITCHEN

4.96m max x 2.39m max (16'3" max x 7'10" max)
Having a range of wall and base units with wooden style worktop, single bowl sink drainer with mixer tap over, five ring double oven Rangemaster, double glazed sash side window, double glazed Velux skylight, Valiant gas boiler, integrated Neff dishwasher, space and plumbing for under counter washing machine, and free standing Samsung fridge/freezer. Recessed ceiling spotlight, wall light, partial tiling to walls, vertical column radiator, tiled flooring, rangemaster and double glazed UPVC French doors leading to garden.

CELLAR

7.65m max x 2.35m max (25'1" max x 7'8" max)
Having gas/electric meters and power.

Stairs rising to first floor accommodation.

FIRST FLOOR LANDING

Having double glazed sash window, stairs rising to second floor accommodation, column radiator and two ceiling light points.

BEDROOM ONE FRONT

5.04m max x 3.78m max (16'6" max x 12'4" max)
Having ceiling light point, column radiator, double glazed sash window with shutters and cast iron fireplace.

BEDROOM TWO

3.85m max x 3.77m max (12'7" max x 12'4" max)
Having ceiling light point, column radiator, double glazed sash window overlooking rear with shutters and cast iron fireplace.

BATHROOM

Having tiled flooring, low flush WC, towel rail, freestanding bathtub, recessed ceiling spotlight, brick style tiled wall, partially obscured double glazed sash window, hand wash basin with storage underneath and tiled splashback. Fully tiled shower cubicle with drench showerhead.

Stairs rising to second floor accommodation.

SECOND FLOOR LANDING

Having ceiling spotlight, column radiator, double glazed sash window, double glazed Velux skylight and loft hatch access.

BEDROOM THREE FRONT

4.64m max x 3.79m max (15'2" max x 12'5" max)
Having recessed ceiling spotlights, two Velux double glazed windows, built in storage cupboard and column radiator.

BEDROOM FOUR REAR

3.87m max x 3.79m max (12'8" max x 12'5" max)
Having wooden flooring, column radiator, ceiling light point and double glazed sash window with shutters.

ENSUITE

Jack and Jill shower room, accessed from bedrooms three and four. Having tiled flooring, pedestal hand wash basin with mixer tap over and tiled splashback, recessed ceiling spotlights, towel rail, low flush WC and fully tiled shower cubicle with drench showerhead.

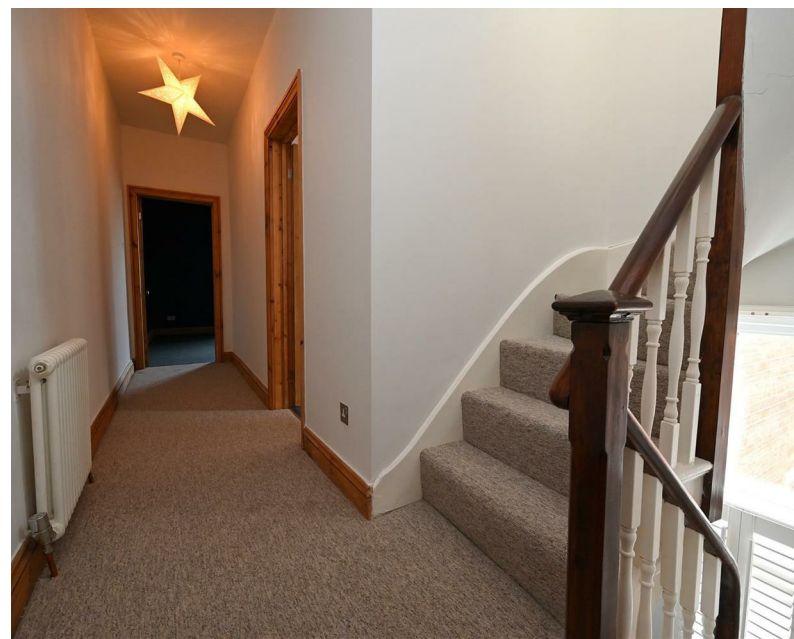
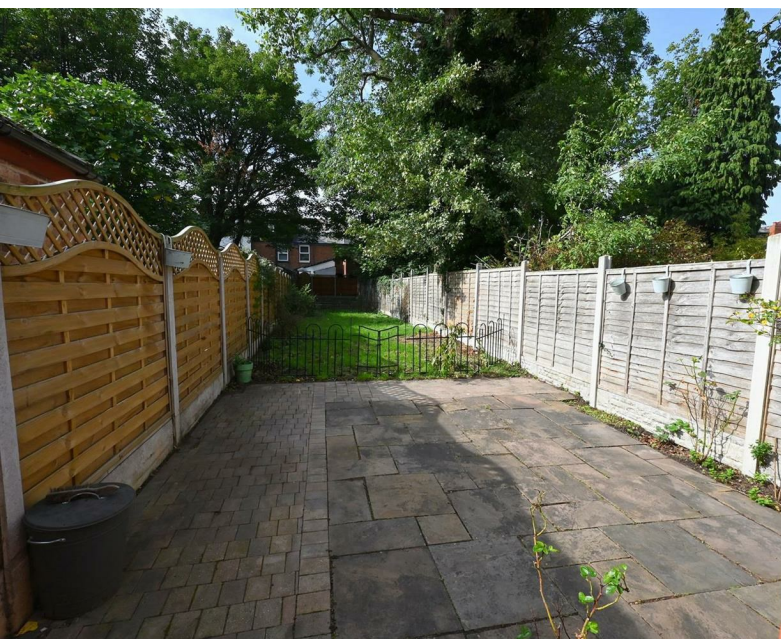
OUTSIDE

Rear garden having paved patio area to rear and side elevation, lawn and further raised patio area. Gate to rear access.

ADDITIONAL INFORMATION

Tenure: Freehold

Council Tax Band: C

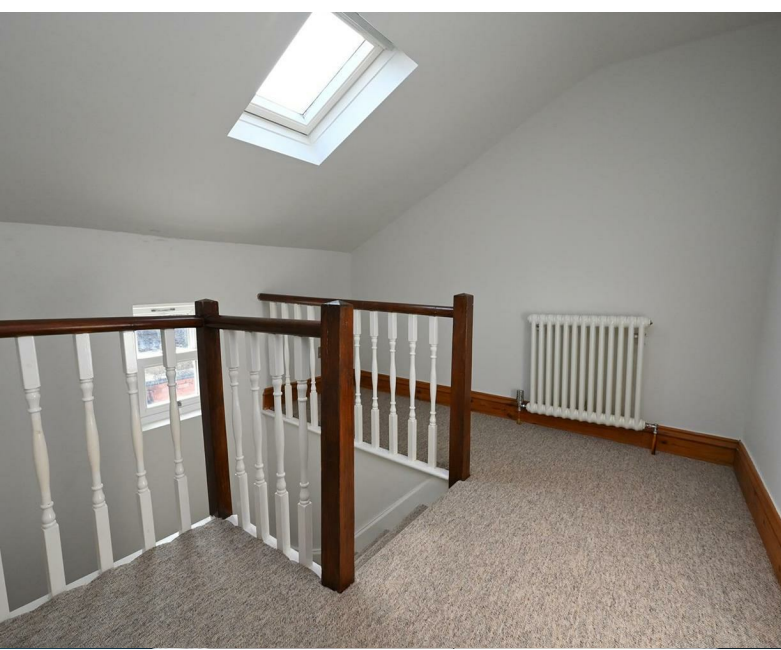


ENGLANDS





ENGLANDS

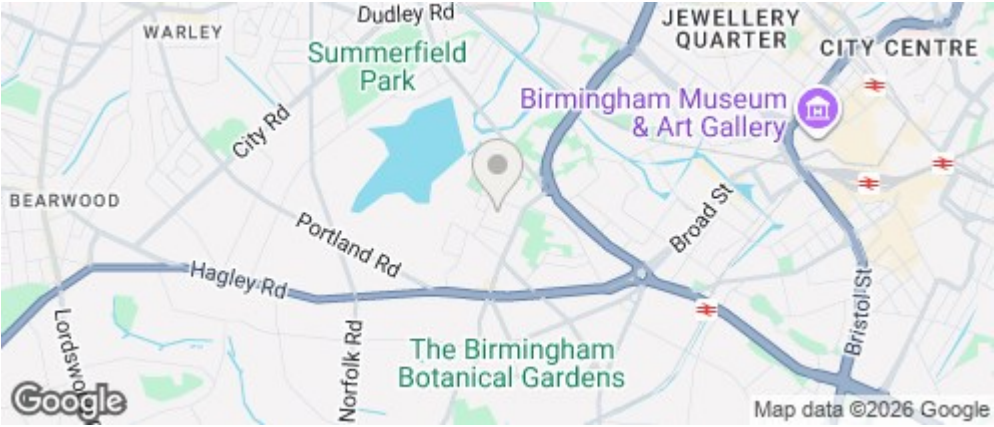




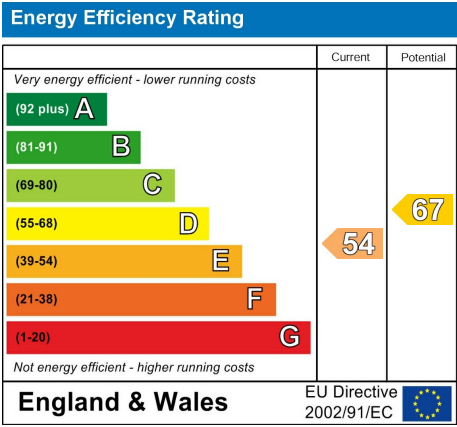
ENGLANDS



ROAD MAP



ENERGY EFFICIENCY GRAPH



FLOOR PLAN



DISCLAIMER NOTICES

“The agent has not tested any apparatus, equipment, fixture, fittings or services, and so does not verify they are in working order, fit for their purpose, or within ownership of the sellers, therefore the buyer must assume the information given is incorrect. Neither has the agent checked the legal documentation to verify legal status of the property or the validity of any guarantee. A buyer must assume the information is incorrect, until it has been verified by their own solicitors. The measurements supplied are for general guidance, and as such, must be considered as incorrect. A buyer is advised to re-check the measurements themselves before committing themselves to any expense. Nothing concerning the type of construction, or condition of the structure is to be implied from the photograph of the property. The sales particulars may change in the course of time, and any interested party is advised to make final inspection of the property prior to exchange of contracts.”

Misrepresentation Act 1967

“These details are prepared as a general guide only and should not be relied upon as a basis to enter into a legal contract, or to commit expenditure. An interested party should consult their own surveyor, solicitor or other professional before committing themselves to any expenditure or other legal commitments. If any interested party wishes to rely upon any information from the agent, then a request should be made, and specific written confirmation can be provided. The agents will not be responsible for any verbal statement made by any member of staff, as only a specific written confirmation should be relied upon. The agent will not be responsible for any loss other than when specific written confirmation has been requested.”

These particulars, whilst believed to be accurate are set out as a general outline only for guidance and do not constitute any part of an offer or contract. Intending purchasers should not rely on them as statements of representation of fact, but must satisfy themselves by inspection or otherwise as to their accuracy. No person in this firms employment has the authority to make or give any representation or warranty in respect of the property.